



GRAB BUCKETS & THUMBS

EXB-CGB2 • EXB-DGB • EX-CUT • EX-CWT • EX-CGT



SUMMER 2024

1-800-565-5007 (CAN) • 1-800-867-1006 (USA) • WWW.CRAIGATTACHMENTS.COM

GET A GRIP.

EX-CUT UTILITY THUMB

Our signature thumb, the **Craig Direct Link Utility Thumb** is designed to mesh with the teeth of your specified bucket. This thumb provides superior grip and dexterity for **day-in and day-out material handling**.

- Max visibility: Tucks close to the stick
- Intermeshes with bucket teeth
- Up to 120° of gripping rotation
- Works with more than one bucket
- Installation and hydraulic kits available



LINKAGE STYLE

Our thumb profiles are available in **three linkage styles**, to best suit your needs.

- **STICK/PAD MOUNT**
- **PROGRESSIVE LINK**
- **DIRECT-LINK**

EX-CWT WORKING THUMB

Optimized for increased reach with greater profile curvature, the **Craig Working Thumb** is designed to **grapple larger objects, maintain grip, and to better suit the rotation of the bucket**.

- Extra curl: Extended reach for a larger material grasp
- Optimal Roll-out angle from the stick for better reach
 - Installation and hydraulic kits available



EX-CGT GRAB THUMB

The **Craig Grab Thumb** profile and design is optimized to suit the primary trenching bucket. Thumb tines are designed to **match the tip radius of the bucket teeth** to allow for precision grappling and placement of items.

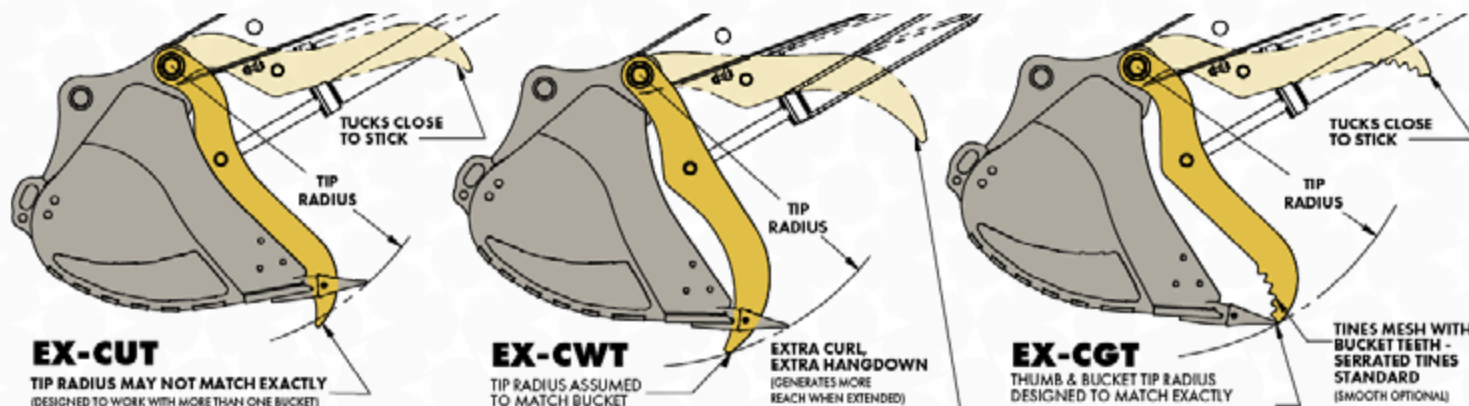
- Perfect "pinch" fit between thumb & bucket tip radius
- Max visibility: Tucks close to the stick
- Intermeshes with bucket teeth



CUSTOM THUMBS

Can't find what you're looking for? No problem. Call us for a custom thumb, built exactly to your specifications.

1-800-565-5007
sales@craigattachments.com

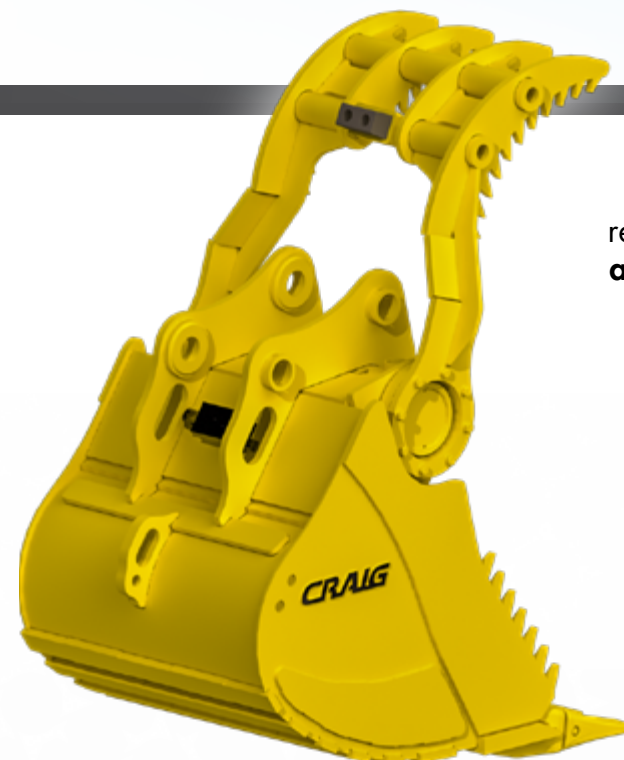


GET IT TOGETHER.

EXB-CGB2 GRAB BUCKET SERIES II

The **Craig Grab Bucket 2** features a helical actuator that replaces standard cylinders, making the attachment **more reliable and stronger than ever**. The actuator produces up to **54,000 foot-pounds of torque at 3000 PSI**, providing continuous grip throughout the entire bucket rotation.

- Perfect for picking, sorting, and transferring material
 - Easily switch between machines quickly
 - Helac actuator provides a steady grip
 - Easy install: No welding required
 - No exposed cylinder shafts



Wide selection of tooth systems and wear protection available to meet your specifications

BUCKET & THUMB
ALL-IN-ONE



EASY
WELD-FREE
INSTALL

EXB-DGB DUAL GRAB BUCKET

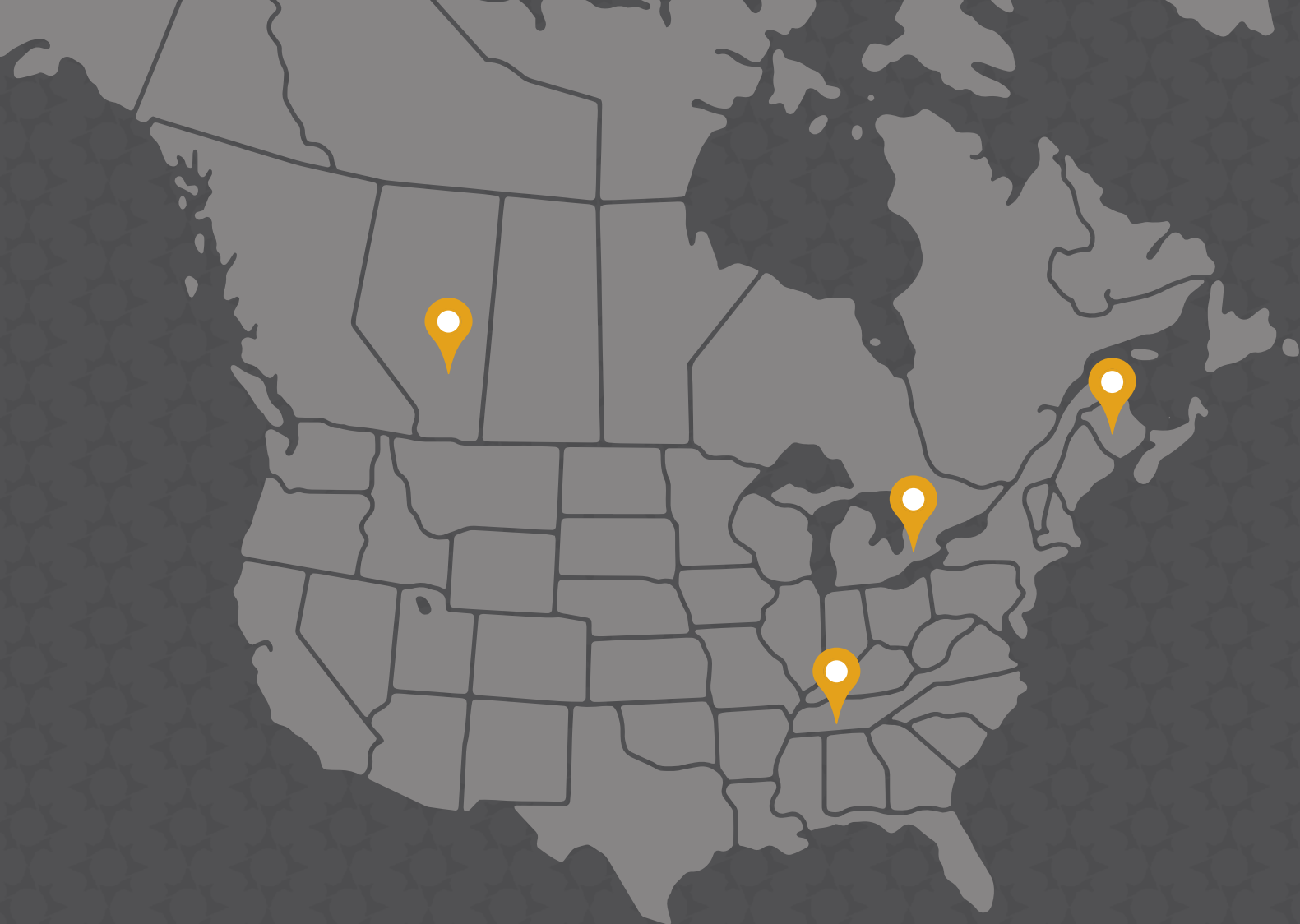
Our **Craig Dual Grab Bucket** is the perfect tool for land clearing and demolition job sites. It features **dual thumb cylinders** on the bucket for **great gripping force** that follows the bucket throughout the entire curl cycle. Both thumbs are mounted directly to the bucket, giving you superior machine versatility and allowing you to **drop the entire thumb and bucket assembly as one piece**.

- Ideal for demolition and land clearing
- Tines and sidecutters serrated for additional grip
- Independent tines clear the stick in open position
- Easily pick up uneven loads



1-800-565-5007
sales@craigattachments.com

Available in Wedge Lock, Pin-on, S-Series, or Manual Bar Lock lugging



HARTLAND OFFICE

96 McLean Avenue
Hartland, New Brunswick
E7P 2K5

• (506) 375-4493



CAMBRIDGE OFFICE

315 Thompson Drive
Cambridge, Ontario
N1T 2B3

• (519) 623-9500



BLACKFALDS OFFICE

88 27323 TWP Rd 394
Lacombe County, Alberta
T4M 0S1

• (403) 356-0048



LAWRENCEBURG OFFICE

408 Commerce Way
Ethridge, Tennessee
38456

• 1 (800) 867-1006



1-800-565-5007 (CAN) • 1-800-867-1006 (USA)

WWW.CRAIGATTACHMENTS.COM

Print date: 05/27/24