



## ALL-SEASON GRADER GEAR

ROADS • DIRT • SNOW • FORESTRY • COMPACTION



1-800-565-5007 (CAN) • 1-800-867-1006 (USA) • [WWW.CRAIGATTACHMENTS.COM](http://WWW.CRAIGATTACHMENTS.COM)





# UNLOCK YOUR GRADER'S FULL POTENTIAL

With over 80 years in this industry, we've seen nearly every type of machine evolve into a versatile, multipurpose workhorse. So, why leave graders out of that evolution? Your motor grader can do more than you think.

A machine that handles snowclearing in winter, earthmoving in spring, brush cutting in summer and surface work in the fall works year-round and delivers far more value than a seasonal specialist.

Partnering with Craig as your source for attachments means complete customizability, unmatched craftsmanship, and support that feels like family, every step of the way.

## Modular Approach

Our grader attachments use many modular components to simplify mounting and maximize uptime through every season, unlocking the full potential of your investment.

(See Page 8)

## Completely Custom

Your attachment should look and perform exactly the way you want. Whether it's a particular paint job, custom steel decal, branding or a never-before-seen design, we're ready to bring it to life.

## Made in USA & Canada

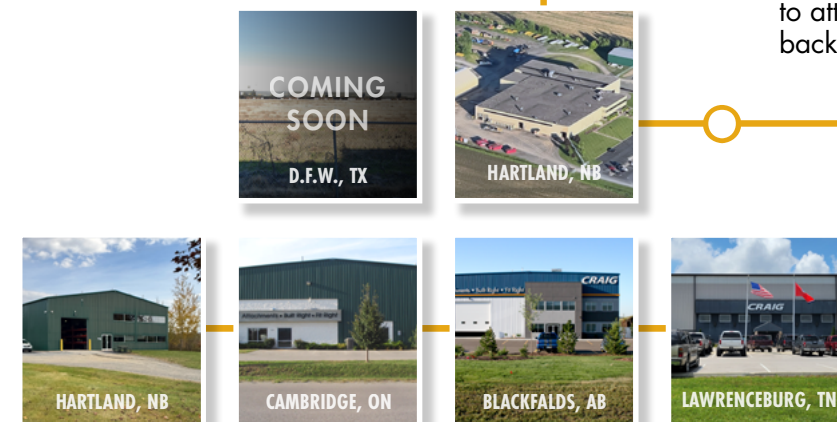
With six branches strategically placed across the United States and Canada (totalling 230,000 sq.ft), we're well positioned to provide support the needs of large, small or growing firms.

# 80 YEARS OF HISTORY

In 1946, shortly after the second World War, Canadian machinist, **Woodford "Woodie" Craig** opened a service station and machine repair shop that sold cars and farm machinery in Hartland, NB. Just over a decade later, the first Craig wing is built and installed on a wheel loader.

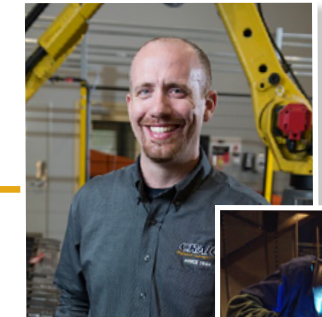


In 1976, bringing years of experience from across the trade, Woodie's son, **John Craig**, joins the company. Nine years later, he becomes president, expanding Craig's product offering from wings and loader buckets to attachments and work tools for excavators, graders, backhoes, dozers and other custom manufactured solutions



In 2014, Woodie's grandson, **Ben Craig**, became president, driving expansion across North America. This includes a 25,000 sq. ft. addition to the Hartland facility, a 94,000 sq. ft. production facility in Tennessee, a service hub in Blackfalds, Alberta, and an Online Dealer Portal.

Since opening the U.S. branch in 2018, the team has grown from 5 to over 80, spanning welders, fitters, engineers, and service staff, with a new service and installation facility set to open in the Dallas/Fort Worth area.



**SKIP THE BROCHURE**  
Get in touch with Craig today



**1-800-565-5007**  
[sales@craigattachments.com](mailto:sales@craigattachments.com)



## LIFT GROUPS

### MG-QKMG PARALLEL QUICK HITCH LIFT

Maximize versatility by enabling front mount grader gear to be changed in seconds. Female blanks are available to convert existing attachments.

- Manual locking pins standard (hydraulic pins optional)
- Works with Balderson style hooks
- Rugged parallel design maintains blade angle at all heights
- Top turnbuckle allows vertical angle adjustment for variations in attachments.
- Large contact area spreads the load over a wide surface for strength.



### YOUR GRADER IS MEANT TO DO MORE.

If you're facing dirt work, snow removal, brushcutting or road work, you can equip just one machine to take care of it all. With cohesive components and a universal design approach, we've developed a complete grader package that makes the most of your machine for all seasons. **One hypercapable machine means you haul less equipment, spend less time swapping and installing, and get more work done.** (See Page 8)

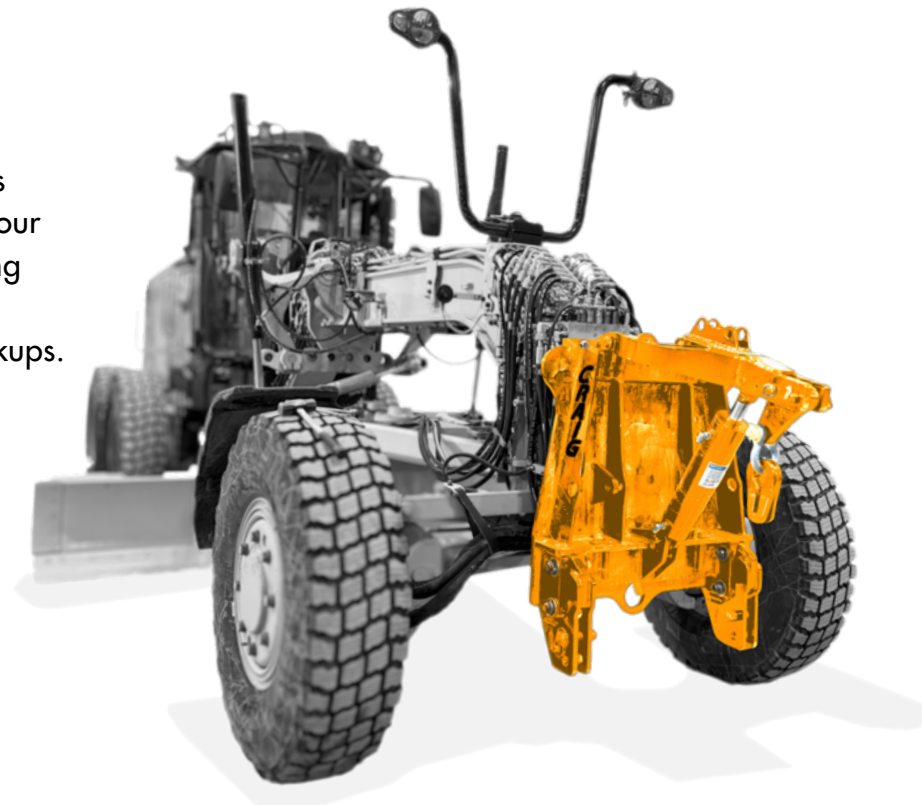


## LIFT GROUPS

### MG-100UNI UNIVERSAL PLOW HARNESS

The Craig Universal Plow Harness features all of the great rugged design features of our standard 100PH with the flexibility of being able to pick up all Craig, Champion and Viking style plows with chain lift style hookups.

- Up to 17" of lift
- Can be designed to operate with your OEM mid-mount scarifier
- Drop blocks included (blocks stored on harness when not in use)
- Rugged 4" double acting cylinder
- Optional down pressure kit for Vee Plow available
- Optional viking quick attach drop blocks available.



### MG-100/107 CRAIG PLOW HARNESS

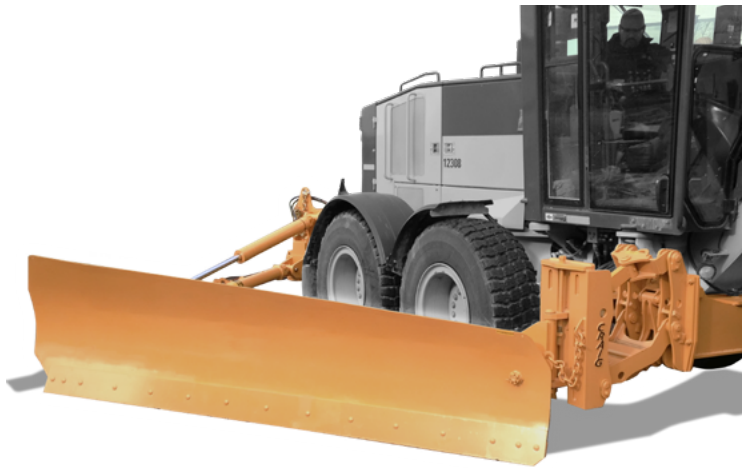
This Plow Harness will accept all Craig models of snow plows: one way, vee plow, reversible and dozer blades with chain lift style of hookup.

- Up to 17" of lift
- Extra strong gusseted A-Frame
- Rugged 4" double acting cylinder
- Optional down pressure kit for Vee Plow available





## WING ASSEMBLIES



### MG-300 POSTLESS WING ASSEMBLY

Designed for maximum operator visibility, this wing assembly uses a parallel-design front lift arm to provide up to 40" of level benching height. Postless design allows for exit from wing side door when needed. This wing series is also the most modular choice with regards to non-snow attachments (see pg. 15).

### MG-300SS SEVERE SERVICE POSTLESS WING

Building on the 300 base design, the Craig Severe Service Postless Wing Assembly is reinforced for severe conditions. Features a super-duty push pole design and open back wing moldboard with high quality torque tube construction.



No post means better visibility from the cab!

### MG-301 HYDRAULIC WING ASSEMBLY

Craig's "post-style" wing assembly is a classic, premium design trusted by municipalities all across North America. Boasting a benching height of 48", this plow uses the same perfect wing moldboard curl from the magic formula we found in the 50's for unparalleled snow curl and discharge.



### MG-301SS SEVERE SERVICE WING ASSEMBLY

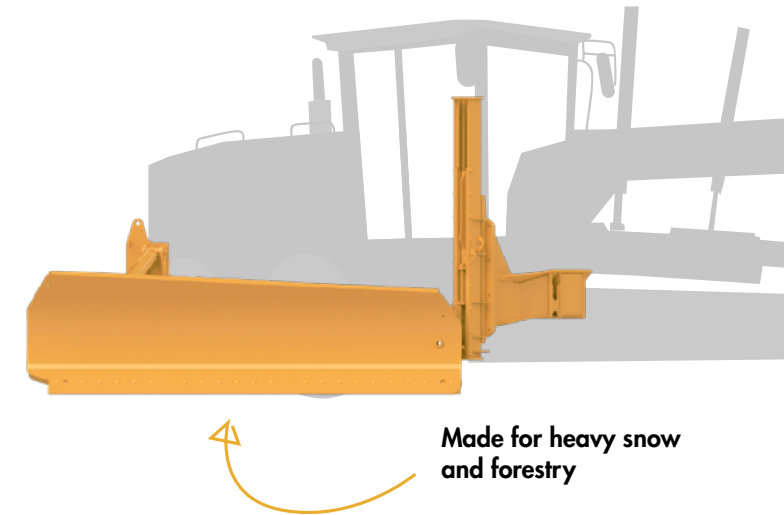
The Craig 301 Severe Service Hydraulic Wing Assembly comes with all the same great features as our standard 301 Hydraulic Wing Assembly in a beefy **severe service** strength package. Ideal for extreme heavy snow fall areas, forestry industries or any scenarios where wing-plows may face very harsh conditions.



### MG-401 | MG-501 HEAVY DUTY HYDRAULIC WING

For 40-series graders and larger, these heavy-duty wing assemblies combines all the proven features of our 301 model with **heavy duty strength**. Its reinforced ribbing, thicker hardware and upgraded hydraulics deliver rugged, long lasting performance. Installs and removes easily in the field.

## WING ASSEMBLIES



Made for heavy snow and forestry

### MG-301US UNDERSLUNG WING ASSEMBLY

The Craig 301 Underslung Wing Assembly offers increased visibility and moldboard angle over the standard 301 Wing Assembly. The front post is mounted behind the articulation point, allowing the grader to maximize articulation with no fear of the wing hitting your rear tandem tires while in carry or plow mode. Available on most machines.





# WING ASSEMBLIES



## MG-302 HIGH LIFT WING ASSEMBLY

Extend the capabilities of your grader with an all hydraulic high lift rear post wing assembly. Featuring 60" of level benching height, this assembly allows operators to double bench snowbanks for more efficient plowing in high snow fall areas. Includes a built-in hydraulic push pole that adds up to 22" of increased reach.



## MG-302FM FRONT MOUNT HIGH LIFT WING

Craig Front Mount 302 Wing assemblies are designed to be mounted to the grader ahead of the articulation point, allowing for superior traction and increased visibility. Boasts the same 60" benching height and 22" of added hydraulic push pole reach as the MG-302 high lift wing.

# Make it Modular.

Changing out grader attachments can eat up a lot of time. On some days, it may cause more trouble than it's worth when you need to switch job functions. That's why we have introduced the *Craig "Flex" Bracket (CFB)* system. By making our components modular in design, you can now change your attachments easier than ever before.

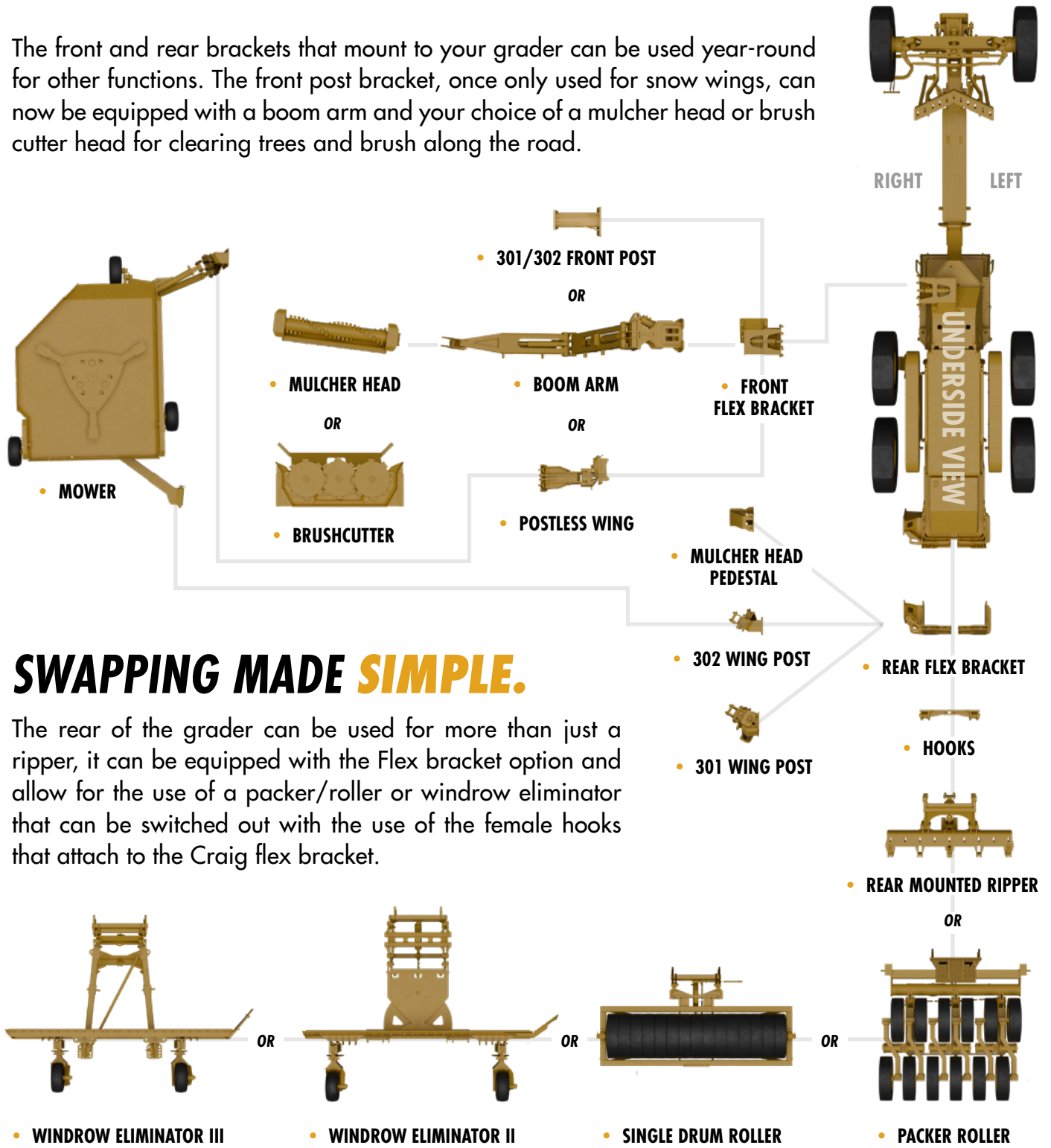
The front and rear brackets that mount to your grader can be used year-round for other functions. The front post bracket, once only used for snow wings, can now be equipped with a boom arm and your choice of a mulcher head or brush cutter head for clearing trees and brush along the road.



REAR FLEX BRACKET



FRONT FLEX BRACKET



# SWAPPING MADE SIMPLE.

The rear of the grader can be used for more than just a ripper, it can be equipped with the Flex bracket option and allow for the use of a packer/roller or windrow eliminator that can be switched out with the use of the female hooks that attach to the Craig flex bracket.



## MG-REV-V FOLDING VEE PLOW

A versatile multi-position plow, the Craig Folding Vee Plow is capable of acting as a vee plow, inverted vee plow, straight blade, or angled blade. Also available with a trip-edge option.



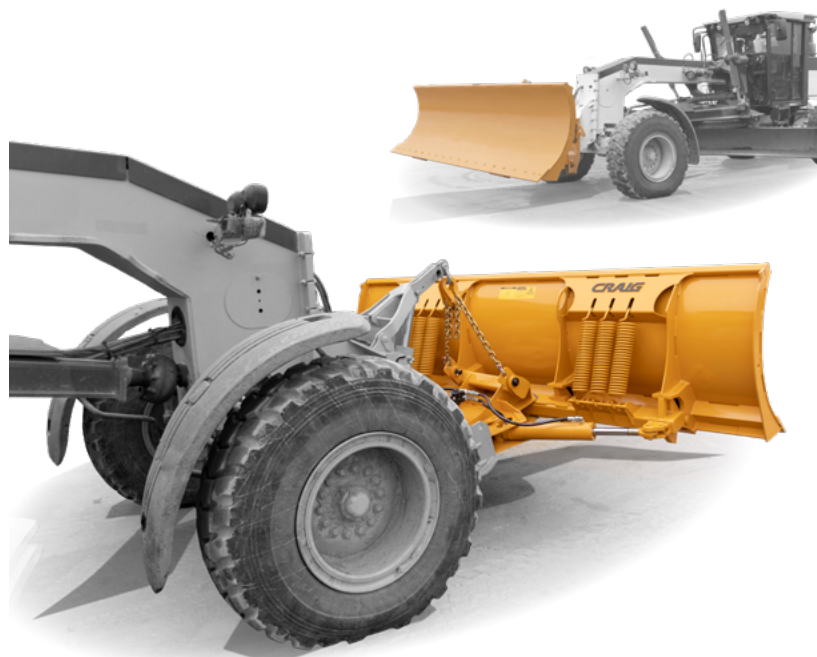
## MG-630 CLASSIC VEE PLOW

Used exclusively for opening some of the worst roads in the north, the Craig 630 Series Vee Plow is one of the most rugged vee plows on the market today. This plow has been, and continues to be, a mainstay of government and private industry.



## MG-7900 HEAVY DUTY REVERSIBLE PLOW

The result of over 70 years of manufacturing and design experience, this reversible is the industry leader in snow equipment for graders to this day. The full floating frame follows the contour of the road both laterally and horizontally to ensure maximum contact.



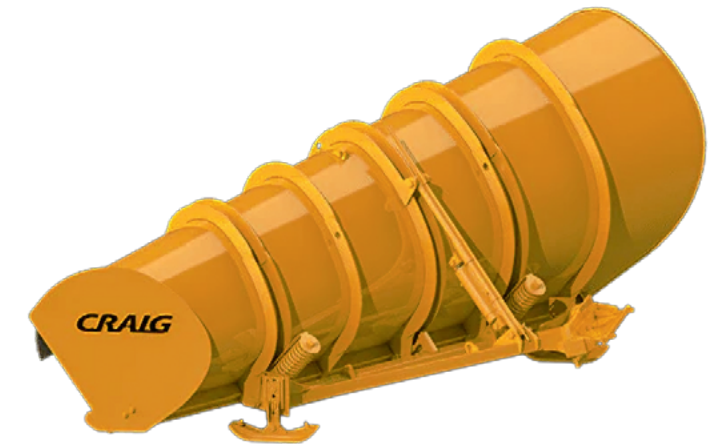
## MG-1072 | MG-1073 ONE WAY PLOW

Built on the legacy of the 670 Series, these plows are designed for reliable, heavy-duty performance. The MG-1072 is ideal for public works, featuring a solid push frame and triangular trip. The MG-1073 offers enhanced durability, shaped by 70+ years of DOT input for extreme conditions.



## MG-683 HIGH SPEED ONE WAY PLOW

Features a very aggressive conical moldboard. This plow has been designed specifically for highway use. The large difference between intake and discharge heights results in superior snow curl and discharge at high speeds.



## MG-WP ONE WAY PLOW WITH WHEELS

Everything operators liked about our one way plow with the added ability of being able to plow at higher speeds. Premium, high-quality and durable wheels decrease wear and provide greater stability to the plow.





## MG-USG

### UNIVERSAL SNOW GATE

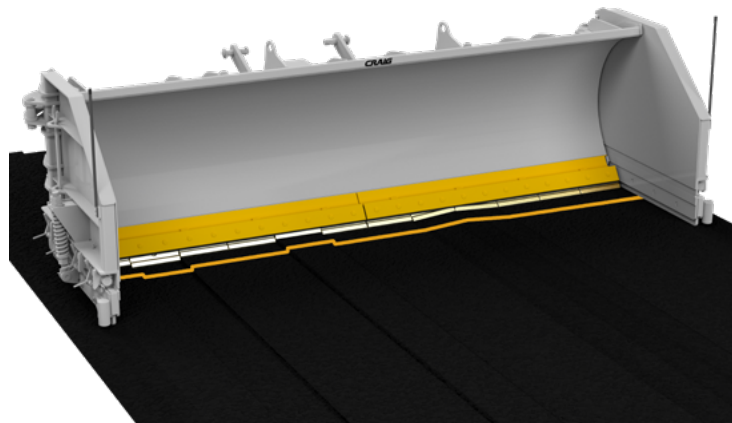
Mounting to the right side of the factory circle moldboard, the Craig Universal Snow Gate operates hydraulically allowing the operator to momentarily interrupt the flow of snow to avoid filling driveways or intersections. It's built extra heavy duty to tackle extreme snow and ice. A floating gate runner allows it to operate cleanly on uneven surfaces.



## SALT SAVER

### LIVE EDGE SYSTEM

Follow the true contours of the road with the new Salt Saver live edge system, available on all Craig Manufacturing snow plows and wings. Designed as a cleaner, greener plow edge solution, the Salt Saver is designed to follow uneven paved surfaces for improved snow removal over a traditional style edge.



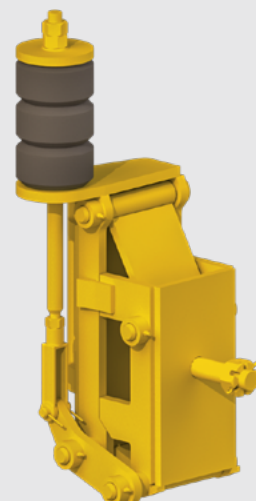
## MG-HTS/MTS

### HYDRAULIC/MECHANICAL TRIP SWIVEL

Protect your wing assembly with a Craig Trip Swivel. Hydraulic and Mechanical options available. Trip swivels allow your wing moldboard to trip when striking an obstacle. Hydraulic option can be reset from the cab. Mechanical option may require the wing to be lifted off the ground to be reset.



MG-HTS



MG-MTS

## MG-DRM

### DIRT ROAD MEDIC

Over time, dirt roads develop potholes, washboarding, and grooves from traffic and weather. The Craig Dirt Road Medic cuts and loosens the compacted surface, making it easier to regrade and smooth. It also pushes larger rocks aside and can break through thick winter ice.



## MG-676

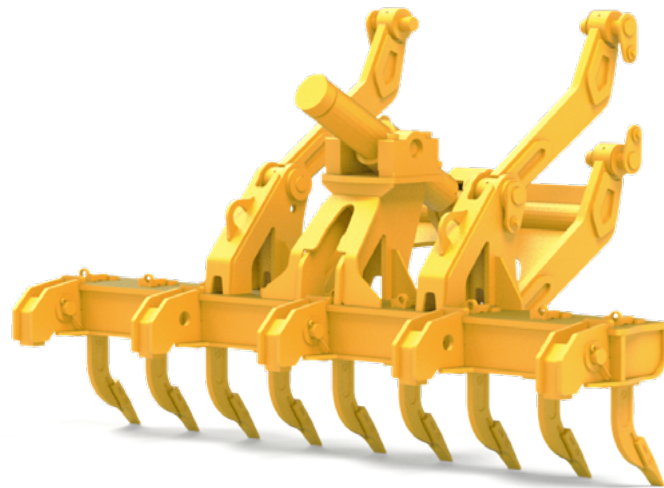
### EXTRA HEAVY DUTY PLOW

Intended for larger motor grader models in mining roads and woods operations, this rugged one-way plow has a proven history of maintaining logging roads year after year.



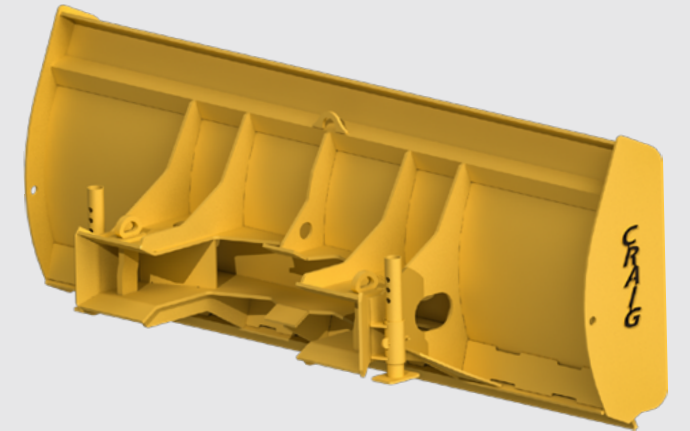
## MG-RMRS REAR MOUNT RIPPER-SCARIFIER

A reliable tool for breaking up compacted soil to prepare the way for smoother grading and leveling work. The parallel lift maintains the ideal angle for effective ground penetration with maximum clearance. Enjoy easy access to grease points and use your choice of standard wear parts. Works seamlessly with all major manufacturers.



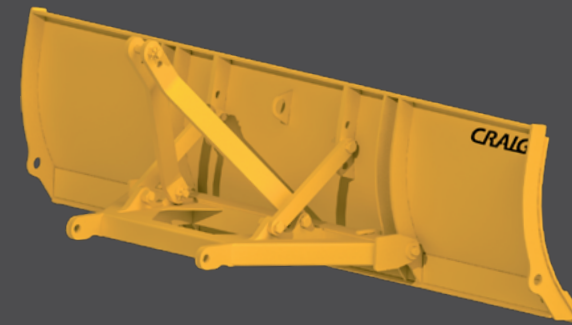
## MG-855 SCARIFIER MOUNT DOZER BLADE

Specifically designed to work with OEM front mount scarifiers, this blade slips over the scarifier tool bar and is locked in place using the OEM scarifier pockets.



## MG-CS-FM FRONT MOUNT SCARIFIER

Designed to bolt directly to the front head block of the grader, the Craig Front-Mount Scarifier offers a parallel lift design to maintain the desired scarifier angle at all heights. Offers three adjustable tilt points. Frame and arms can be used with a dozer blade.

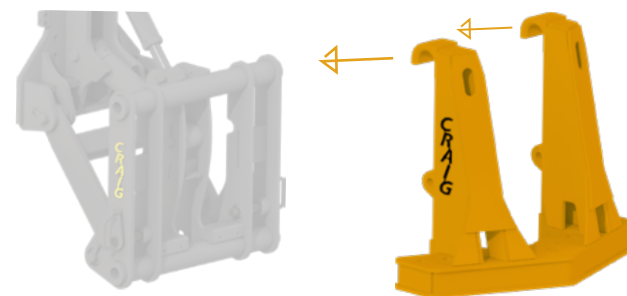


## MG-850 STRAIGHT FIXED DOZER BLADE

Available in 8', 9', and 10' blades, this fixed dozer blade works with our standard chain lift group plow harness. Available in a variety of hookups.

## YOUR ATTACHMENT. YOUR WAY.

Craig offers full customization on your attachments, including paint colour, wear parts, custom branding and more.



## MG-CS-FMH FRONT MOUNT SCARIFIER HEAD

The Craig Front Mount Scarifier Head features lift hooks to work with the Craig Parallel Lift Group. Features a 'v' style scarifier head for efficient breaking up of material. Designed to accept various ripper shanks/teeth options.

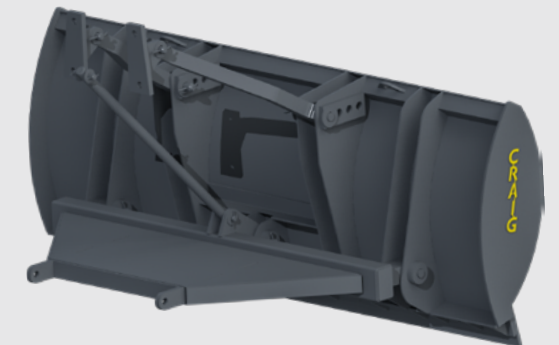
## MG-851 MANUAL ANGLING DOZER BLADE

Available in 10', 11', and 12' blades, the Craig Manual Angling Dozer blade offers 30° of angle in both directions for maximum versatility. It is recommended for use with a parallel lift harness. Hydraulic cylinder option available.



## MG-850-CH CHAMPION STYLE DOZER BLADE

This blade features a rugged hook-up, dual stabilizing arms, and a down pressure strut. End gates come standard to prevent material spillover. Compatible with Champion, Volvo, or Craig's Universal Plow Harness.





## MG-GR GRAVEL RETRIEVER

Efficiently retrieves lost gravel while mulching berms and reducing mowing. Features 12 robust 24" harrow disc blades and an adjustable weight-supporting wheel. This retriever swaps out with the Craig 300/301/302 wing moldboard, making it a quick and easy install.



## MG-WEIII WINDROW ELIMINATOR III

A rugged solution for reclaiming the road shoulder. The Windrow Eliminator series III features a robust design with minimal extension behind the grader. Eliminates the need for an extra pass to spread the windrow from front blading work. Capable of side shifting up to 36" left or right and angling up to 45°.



## MG-MHB MULCHER HEAD & BOOM ARM

A robust mulching solution designed for the Craig 300 Series Postless Wing, featuring a 72" cutting width that efficiently tackles brush and trees up to 6" in diameter. Our enclosed design protects key components while the variable displacement hydraulic motor and parallel lift boom arm ensure precise, reliable positioning, cutting down extra passes and downtime.



## MG-PSI ROLLER PACKER

Maximize your motor grader's productivity with a Craig Roller Packer. This cost saving tool allows the grader to do blade work while compacting material on the rear. The compactor can be mounted directly to the graders bumper or it can be designed to attach to the Craig rear wing bracket.



## MG-MOW GRADER MOWER

The Craig Grader Mower cuts 7' swaths of tall roadside grass with three powerful flail blades. Designed to mount to the Craig 300 Postless Wing assembly, it offers manual adjustment for up to 30" of additional reach.



## MG-BCH BRUSH CUTTER HEAD & BOOM ARM

Perfect for clearing the way for Craig's Mulcher Head or scenarios where cutting is needed, but mulching isn't necessary. Easily cut through brush and trees greater than 6" in diameter with 72" of cutting width. Mounts to Craig Boom Arm.

## MG-PSII SINGLE DRUM ROLLER PACKER

The MG-PSII Single Drum Roller Packer turns your grader into a one-machine grading and compaction solution. By eliminating the need for a follow-behind roller, it saves time, fuel, and labor while delivering dense, stable surfaces in a single pass. Complete with airless tires and an accumulator to keep constant pressure on uneven roads. Available in 8' or 10' width.





# CRAIG PORTAL

**THE CRAIG PORTAL IS YOUR GATEWAY  
TO CRAIG PARTS AND ATTACHMENTS!**

## FOR PARTS

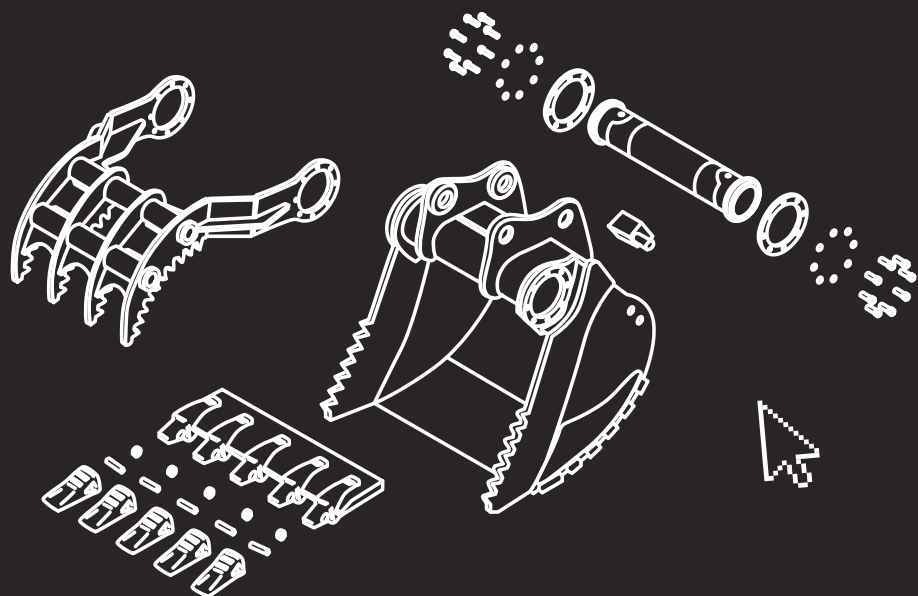
Order your Craig parts online with the Craig Portal. Skip the phone call, login to get quotes and place orders for replacement parts.

## FOR ORDERS & INVOICES

With the Portal, you can also track invoices and shipments so you never have to wonder where your order is!

## FOR ATTACHMENTS

Portal allows you to configure a custom attachment quote in minutes. The Craig Portal guides you through to what you need with ease and gets you a quote quickly and simply 24/7.



—CALL CUSTOMER SUPPORT TO SET UP YOUR ACCOUNT—

**PORTAL.CRAIGATTACHMENTS.COM**

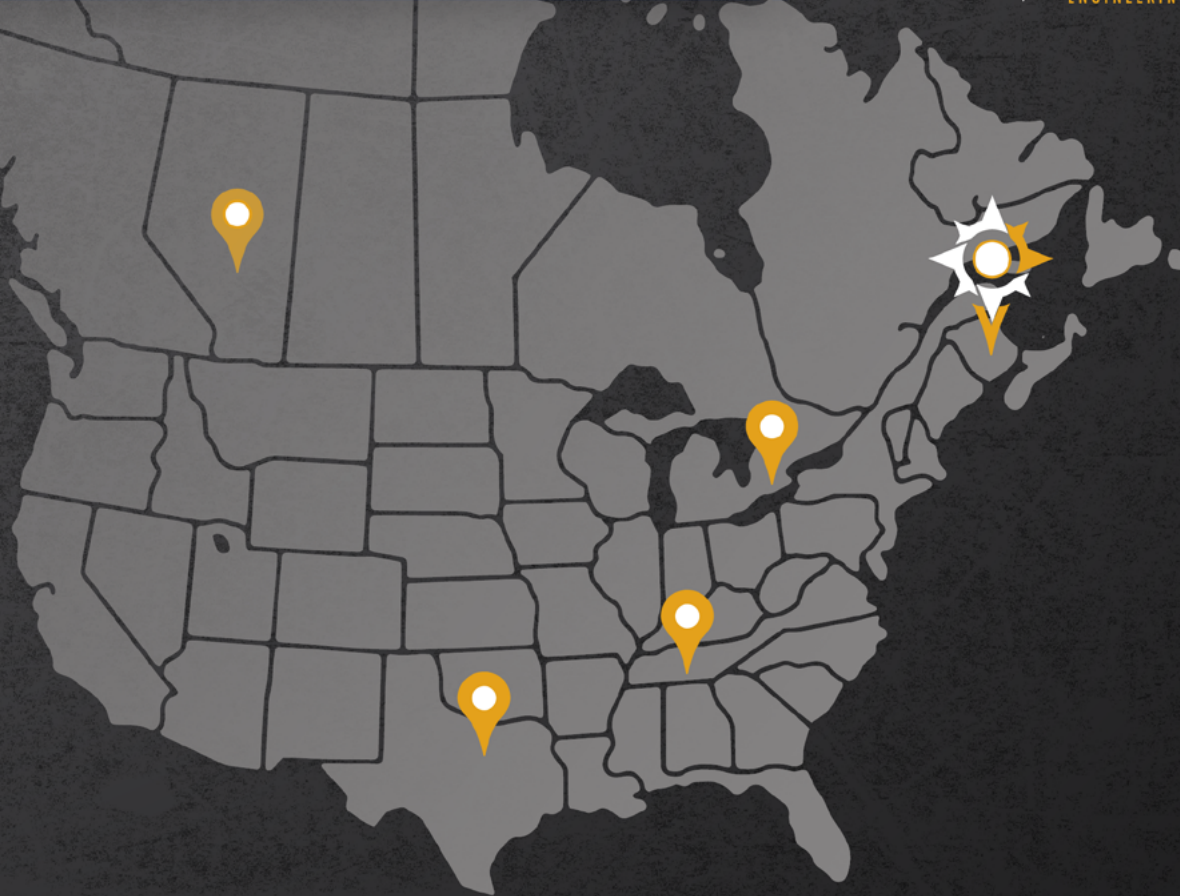




OFFICES ALL ACROSS NORTH AMERICA



EST. 1946



#### HARTLAND, NB

96 McLean Avenue  
Hartland, New Brunswick  
E7P 2K5, CA

• (506) 375-4493



#### CAMBRIDGE, ON

315 Thompson Drive  
Cambridge, Ontario  
N1T 2B3, CA

• (519) 623-9500



#### BLACKFALDS, AB

88 27323 TWP Rd 394  
Lacombe County, Alberta  
T4M 0S1, CA

• (403) 356-0048



#### HARTLAND, NB (SERVICE)

70 McLean Avenue  
Hartland, New Brunswick  
E7P 2K5, CA

• (506) 375-4493



#### LAWRENCEBURG, TN

408 Commerce Way  
Ethridge, Tennessee  
38456, USA

• (931) 996-7248



#### FORT WORTH, TX

6701 Snowden Rd  
Fort Worth, Texas  
76140, USA

• (800) 867-1006

## OUR COMMITMENT

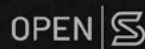
### CUSTOMERS

Craig is dedicated to providing the highest quality products and support to allow our customers to unlock the maximum potential productivity of their equipment

### TEAM MEMBERS

We are committed to providing our Team Members with a stable, 5S and safe working environment that encourages personal and team development. Team creativity and innovation are the cornerstones on which our company has been built and only through these achievements will it succeed.

Facebook @CRAIGMANUFACTURING  
Instagram @CRAIGMANUFACTURINGLTD  
Twitter @CRAIGATTACHMENTS  
YouTube @CRAIGMANUFACTURING



WWW.CRAIGATTACHMENTS.COM