

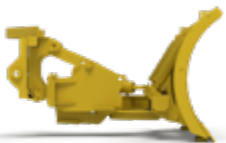
WL-6900 HEAVY DUTY REVERSIBLE PLOW

* Attachments depicted may include optional upgrades or custom configurations.



This is the pre-cursor to our 0600 Series Reversible Plow. The 6900 Series is a rugged reversible plow for heavy snow conditions. With three trip springs on each side of the plow, and two centred oscillating cylinders, this plow design has been tested, refined, validated and proven by municipalities across North America for over 40 years.

- Trip moldboard standard; trip edge available
- Replaceable wear shoes and cutting edge for long wear life
- Down pressure and float capable, with the use of down pressure/lift arms (standard)
- Available in Craig Quik key, OEM couplers, wing assembly, or Pin-on configuration
- Follows contours of the road
- Available with Craig Salt Saver (option)
- Optional third valve required on machine



Hartland Office
96 McLean Avenue
Hartland, NB
E7P 2K5 Canada

Ph: (506) 375-4493

Cambridge Office
315 Thompson Drive
Cambridge, ON
N1T 2B3 Canada

Ph: (519) 623-9500

Blackfalds Office
88 27323 TWP Rd 394
Lacombe County, AB
T4M 0S1 Canada

Ph: (403) 356-0048

Lawrenceburg Office
408 Commerce Way
Ethridge, TN
38456 USA

Ph: 1 (800) 867-1006

D.F.W. Office
6701 Snowden Rd
Fort Worth, TX
76140 USA

Ph: 1 (800) 867-1006



1-800-565-5007 • WWW.CRAIGATTACHMENTS.COM