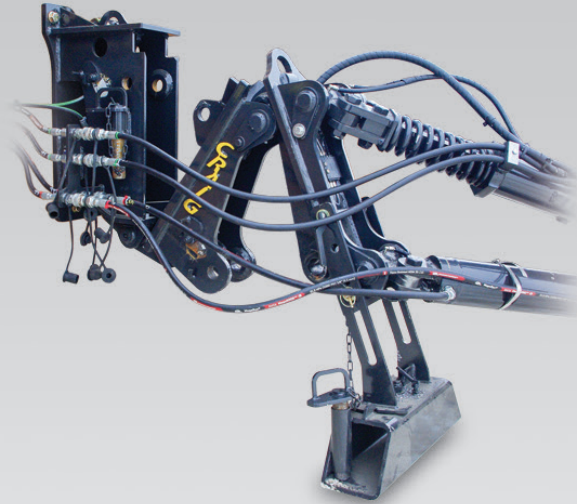


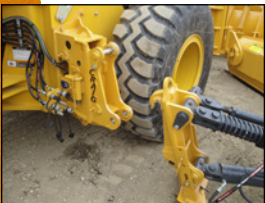
WL-QA

QUIK PIK REAR POST BRACKET



The Quik Pik Rear Post Bracket allows the complete push pole assembly, wing, and plow to be disconnected from the loader by a single person without tools in just minutes.

- Can be installed using existing push poles
- No additional hydraulic valve sections or cylinders required
- Package comes complete with all necessary items for installation including hydraulic quick disconnects
- Does not affect the performance of the wing



Hartland Office

96 McLean Avenue
Hartland, NB
E7P 2K5 Canada

Ph: (506) 375-4493

Cambridge Office

315 Thompson Drive
Cambridge, ON
N1T 2B3 Canada

Ph: (519) 623-9500

Blackfalds Office

88 27323 TWP Rd 394
Lacombe County, AB
T4M 0S1 Canada

Ph: (403) 356-0048

Lawrenceburg Office

408 Commerce Way
Eithridge, TN
38456 USA

Ph: 1 (800) 867-1006

