

**PART**  
**SALT SAVER CUTTING EDGE**



***SAVES SALT***  
***LASTS LONGER***  
***QUIETER CAB***  
***EASY REPLACEMENT***

***CRAIG***™

PART  
SALT SAVER CUTTING EDGE  
FEATURES AND BENEFITS



Follow the true contours of the road with the new Salt Saver live edge system – now available on all Craig Manufacturing snow plows. Designed as a cleaner, greener plow edge solution, the Salt Saver is designed to follow uneven paved surfaces for improved snow removal over a traditional style edge.

ENVIRONMENTALLY CONSCIOUS

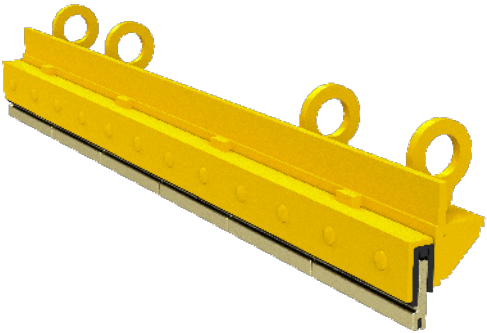
Designed with the environment in mind, the Salt Saver is 100% recyclable. None of the rubber is bonded to the steel making it easier to break down the components for easy recycling of the various materials.

COST-SAVINGS

The Salt Saver is designed to save you money. Each 12 inch section moves vertically and axially with up to one inch of travel, meaning consistent contact with the paved surface across the entire edge of the plow. Snow is removed more effectively from the surface saving you salt, sand, and fuel usage.

OPERATOR AND EQUIPMENT FRIENDLY

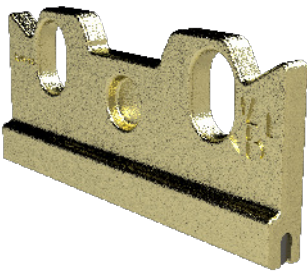
Plow operators are often times in the cab of their machine for many hours, the Salt Saver makes this job a little less fatiguing. The rubber pad holding the edge absorbs the vibration and noise making the cab a quieter place for the operator to work in. This also helps to reduce the overall wear on the equipment as it stops the vibrations from being sent through the rest of the plow and machine.



Edge assembly with Salt Saver edge installed.

HIGH WEAR LIFE

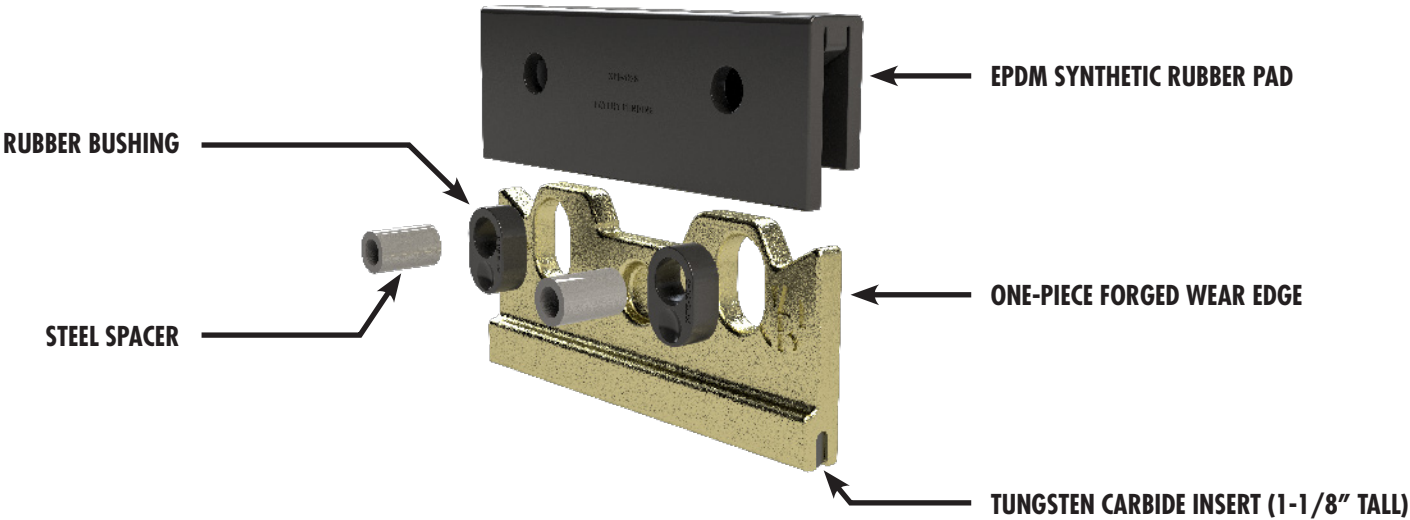
Custom one-piece forged steel wear edge supports a custom tungsten carbide insert that is brazed into the bottom surface. These inserts are a proprietary chemistry and design that significantly reduce their tendency to crack and disintegrate meaning you get a longer life out of your edge. Additional wear protection is added by the rubber pad which offers reduced vibration of the edge assembly.



One-piece forged wear edge with tungsten carbide insert.

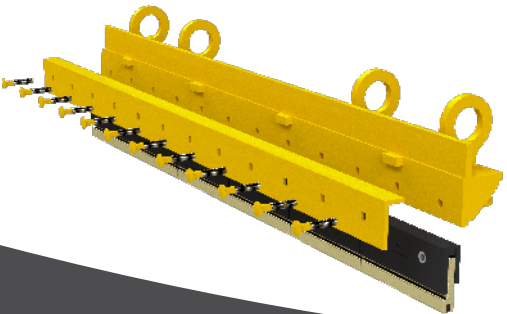
EASY REPLACEMENT

Each 12 inch edge section weighs only 11 pounds and is secured in place with two bolts. This light weight design coupled with the easy install and replacement process means less time spent in the shop replacing edges.



NO METAL-ON-METAL

The forged edge is surrounded by a rubber pad and the bolts pass through rubber bushings meaning there is no metal-on-metal contact. This reduces the overall wear on your entire edge assembly, giving your plow a longer life.



No metal-on-metal contact between the Salt Saver edge and your plow.





#### **HARTLAND OFFICE**

96 McLean Avenue  
Hartland, New Brunswick  
E7P 2K5 Canada

Ph: (506) 375-4493



#### **CAMBRIDGE OFFICE**

315 Thompson Drive  
Cambridge, Ontario  
N1T 2B3 Canada

Ph: (519) 623-9500



#### **BLACKFALDS OFFICE**

88 27323 TWP Rd 394  
Lacombe County, Alberta  
T4M 0S1 Canada

Ph: (403) 356-0048



#### **LAWRENCEBURG OFFICE**

408 Commerce Way  
Ethridge, Tennessee  
38456 USA

Ph: 1-800-867-1006



**1-800-565-5007 • [WWW.CRAIGATTACHMENTS.COM](http://WWW.CRAIGATTACHMENTS.COM)**